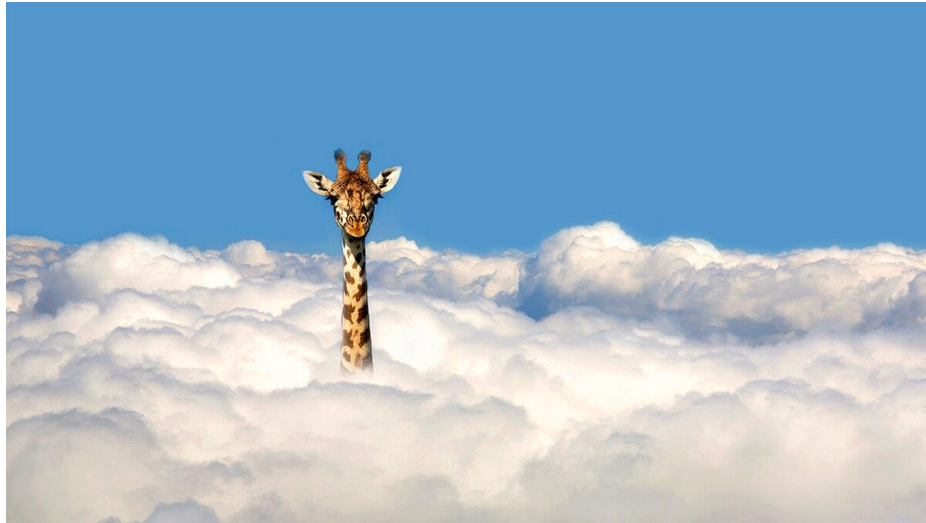


Spiritual Leadership Series ~ Perceptions Of The Word Spiritual



Mushiba: Previously, we found that Leadership is Concrete. In this reflection, we look at the word Spiritual ~ what does it mean? Checking in with *Merriam-Webster*, we find, “ecclesiastical rather than lay or temporal.” My interpretation of this definition is that Spiritual is Abstract. Thus, we are, once again, looking at concrete and abstract defining one phrase and, Ohhh Nooo, bringing balancing to both:

Waith: *“Abstract to each energy form is different than it is to another energy form ~ it is individual and something that is seen from Self’s own levels of awareness.*

“We caution you ... about the spiritual elitist who tell you what it means to be spiritual by saying, ‘This is what you must do ~ this is what you must say ~ this is what you must believe ~ and this is how you say it ~ and this is how you behave ~ here is the ritual that you will adhere to ~ and, if you do this, this and this, you will achieve some high level of spirituality ~ you must fast ~ you must consume only certain kinds of food and then you must have a cleansing of body.’ This is nonsense.

“Spiritual is your sense of balance between the abstract and the concrete ~ and each of you is different because of the concept of taking a percentage of the lesson to be learned. Each of you is at various points of completion within a particular percentage, and you have taken on percentages that are different from others in learning your lessons. Spiritual Leadership is simply the abstract and concrete coming together.”

We are bombarded by people telling us how to live and be more spiritual: “I do not eat animals or their by-products ~ am I more spiritual than a person who does? The way I meditate is by sitting crossed legged with a candle in front of me ~ am I more spiritual than a person who does not?” The questions go on and on and can make a person feel inadequate unless Self Recognizes that it is a journey within Self, achieved step by step, percentage by percentage, lifetime by lifetime.

And, through it all, remember to *Focus on Lightheartedness and the Spreading of Light!*

Question to Ponder: What comes to mind when you hear the word Spiritual?